

Scandinavian quality
= Reliable / durable

VENTILATION non-electric

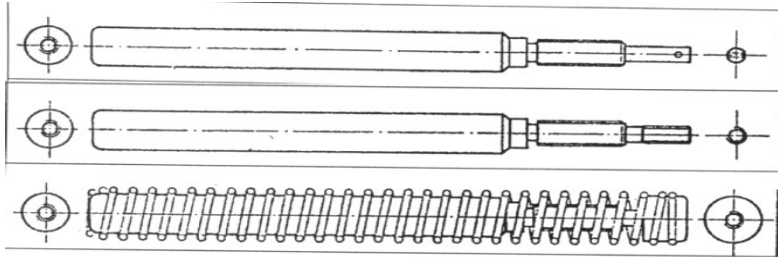
Working 24 hours/day
at no extra costs

Environmentally friendly

due to working by the use of nature's own materials : expands +retracts by heating +cooling of wax, which consists of plant oils
(= harmless to humans even if licked, as opposed to electricity failures)

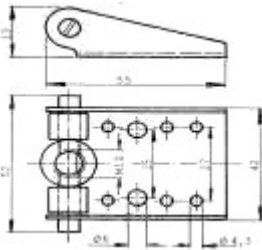
18

THERMACT

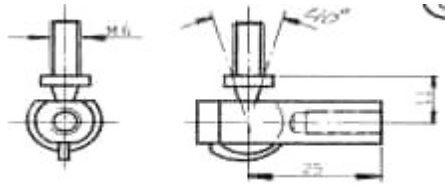


Type

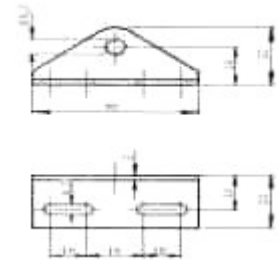
- B** End plug with internal M6 thread
Piston bar with cotter hole
- D** End plug with internal M6 thread
Piston bar with M6 thread
- E** End plug with internal M6 thread
Spring holder w/internal M6
thread too.



Fitting F / W:52 H:13 L:55



Fitting G / M6 L:25 W:11



Fitting H / 46x20 mm H:22

Temp: Celsius									
Wax-type	Choice of wax in Cylinders					Cylinder/stroke length			
	Cylinder/opening					Thermact		H-D Cylinder	
						Stroke length			
Temp. range °C	Start open	Fully open	Start closing	Fully closed	Cyl. 130 mm	Cyl. 200 mm	Cyl. 273 mm	Cyl. 450 mm	
F32E5D1G	13-34°	18°	34°	31°	13°	38	65	93	160
D	6-12°	9°	12°	8°	6°	27	45	64	11
E	22-29°	24°	29°	27°	22°	49	83	119	206
E5 D	19-27°	21°	27°	24°	19°	46	78	111	191
E10 D	14-26°	16°	26°	22°	14°	41	70	100	173
E15 D	12-25°	15°	25°	21°	12°	37	63	90	155
F	38-45°	41°	45°	41°	38°	40	67	96	166
F10 D	24-41°	27°	41°	37°	24°	46	78	112	194
F20 D	15-40°	20°	40°	34°	15°	41	70	100	173

L	130	200	273	450
---	-----	-----	-----	-----

